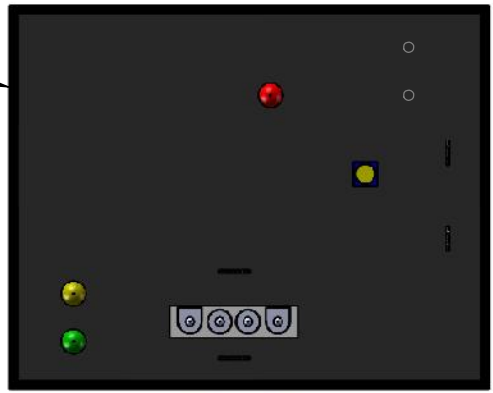
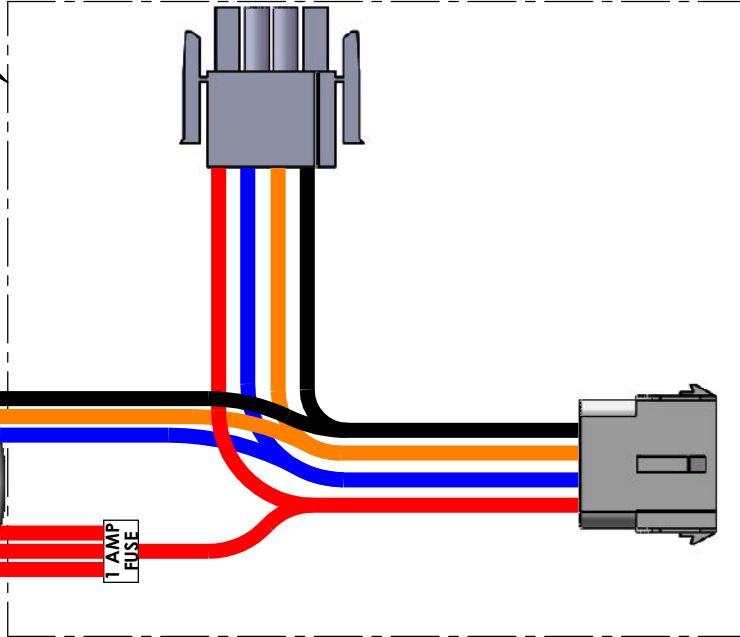


P100371



W2018



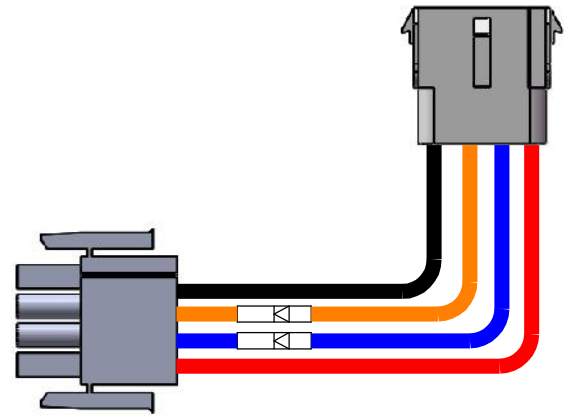
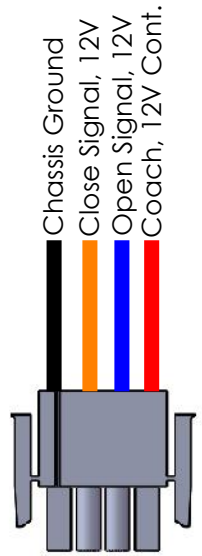
P100536



W3131

W2010

MUST BE USED WITH ANY STARCRAFT OR FEDERAL COACH SYSTEMS. CONTACT A&M SYSTEMS FOR DETAILS



NEXT ASSY.:  
 SUPERSEDES:  
 DO NOT SCALE DRAWING

| REV. | BY | DATE | DESCRIPTION |
|------|----|------|-------------|
|      |    |      |             |
|      |    |      |             |
|      |    |      |             |

|                            |                         |
|----------------------------|-------------------------|
| TOLERANCE UNLESS SPECIFIED | DRAWING INFORMATION     |
| Fractions: +/- 1/32        | DRAWN: bmilller CKD.:   |
| Decimals: .000 +/- .005    | DATE: 1/17/2013 SIZE: A |
| Angles: +/- 1 Deg.         | SCALE: 1:1.5 WT.:       |

TITLE  
 P034 - Remote Control Wiring Instructions

MAT'L SPEC.  
 PART NUMBER  
 DOC00034  
 PAGE  
 1 OF 1

THIS DRAWING IS THE PROPERTY OF A&M SYSTEMS, INC. AND IS NOT TO BE DUPLICATED OR USED IN ANY WAY DETRIMENTAL TO THEIR BEST INTEREST.