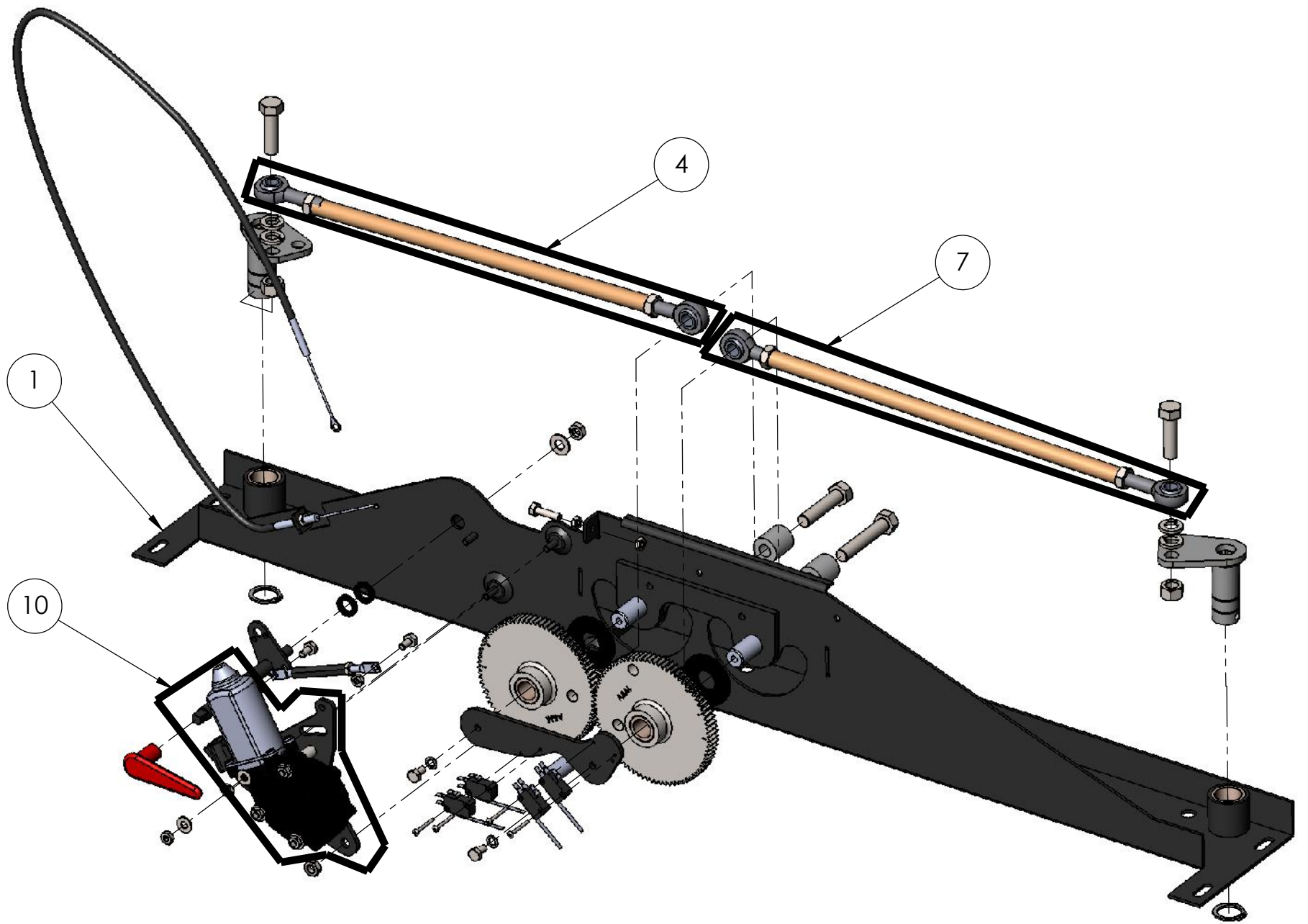
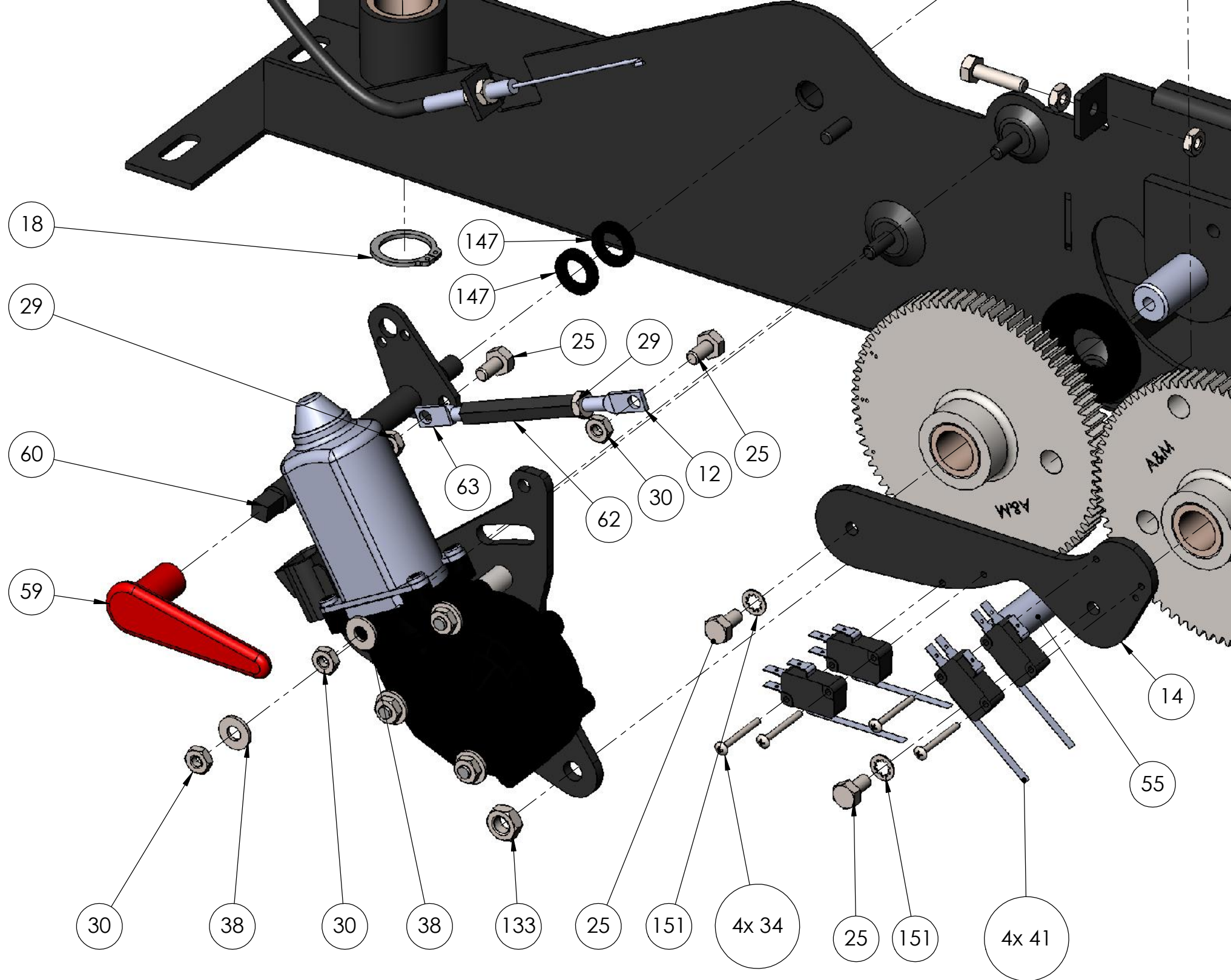


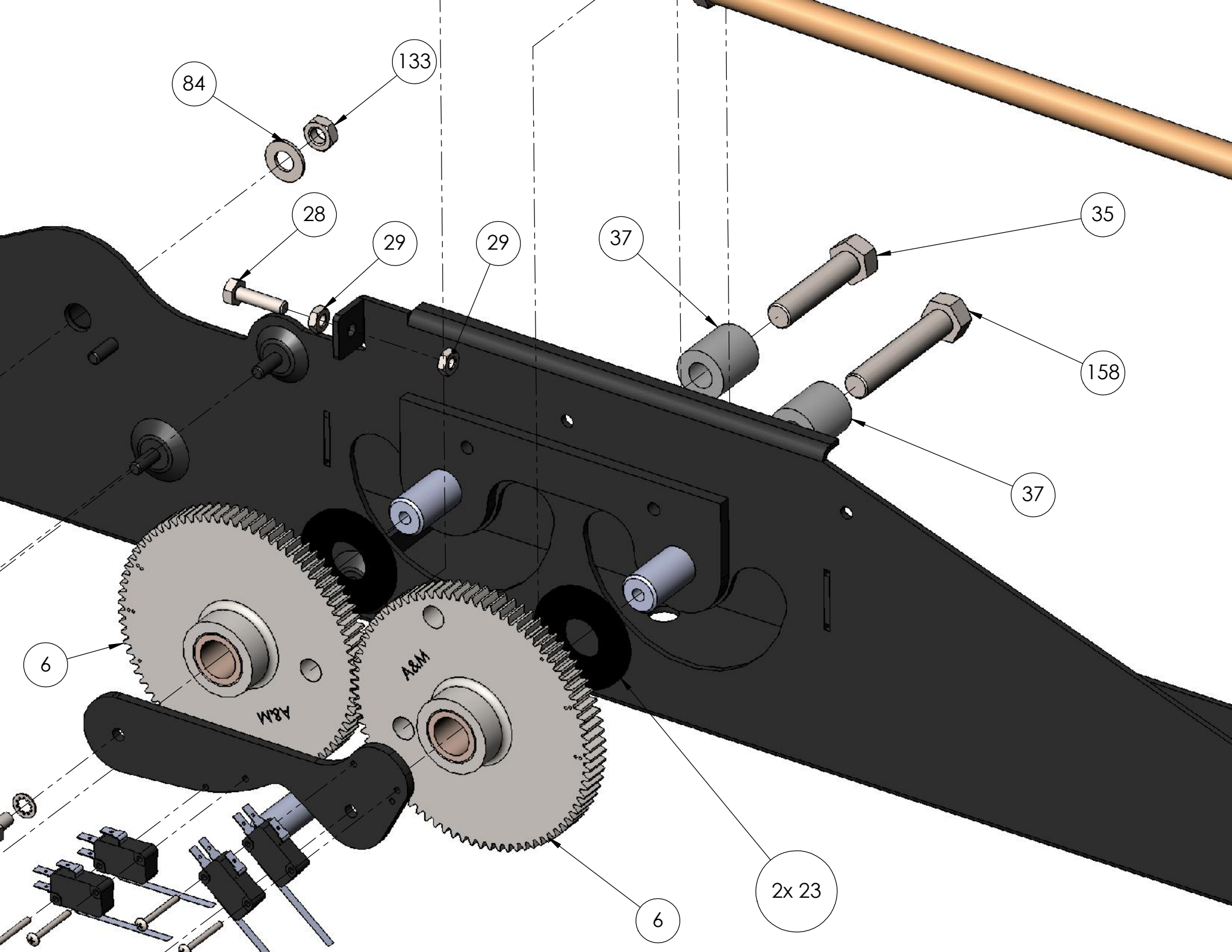
Model: 5142



Index No.	Part No.	Description	No Req'd
1	M1685-24	5142 Base plate weldment, with bushings	1
4	P100321	5142 Push-pull rod assembly, forward	1
5	P100022	Nut, 1/2-20 zinc plated	2
6	P100071	Gear, with bushing	2
7	P100325	5142 Push-pull rod assembly, aft	1
10	P100489	Motor Assembly	1
12	P100198	Bolt, hanger, 1/4 flattened end x 2"	1
13	K9129	PC board	1
14	1790	Gear stabilizer	1
18	P100027	Snap ring, (1" shaft)	2
19	P100005	Bolt, 1/2-20 x 1-3/4"	2
20	P100019	Lock washer, spring type, 1/2"	4
23	1655	ABS Washer	2
25	P100001	Bolt, 1/4-20 x 1/2"	3
28	P100003	Bolt, 1/4-20 x 1"	2
29	P100026	Nut, plain, 1/4-20	4
30	P100024	Nut, nylock, 1/4-20	2
34		Screw, 4-40	4
35	P100006	Bolt, 1/2-20 x 2-1/4"	1
36	P100047	Motor	1
37	2311	Spacer, .504" ID x 3/4" OD x 1-1/8" Lg	2
38	P100018	Washer, 1/4 SAE Flat Zinc	3
41	P100060	Switch, Long Arm	4
55	1894	Null Switch Extension	1
56	1933	Motor Mount	
59	P100315	Manual Release Handle	1
60	1957	Manual Release Shaft w/ Attachment	1
62	1767	Turnbuckle, 1/4"-20 LH, RH	1
63	P100283	Bolt, Hanger, 1/4" flattened end x 2", LH	1
64	P100284	Bolt, 1/2"-20 x 2.5"	1
77	1980	Actuator Arm, 2 in 1, Weldment	2
84	P100023	Washer, Flat, SAE, 18-8, 3/8	1
133	P100481	Nut, 3/8-16, nyloc nut, thin	2
143	1975	Cable and Conduit, 52" OAL conduit, 7x7 galvanized cable 64" OAL	1
147	1943	Washer, ABS, .8125 OD x .5 ID x .125	2
149	2184	Bolt, Carriage, Square Neck	3
150	P100649	Spacer, .257" ID x .50" D x .688", Nylon	3
151	P100531	Washer, 1/4", serrated, internal	2
158	P100344	Bolt, Hex Head, 1/2-20 x 2-3/4"	1







84

133

28

29

29

37

35

158

37

6

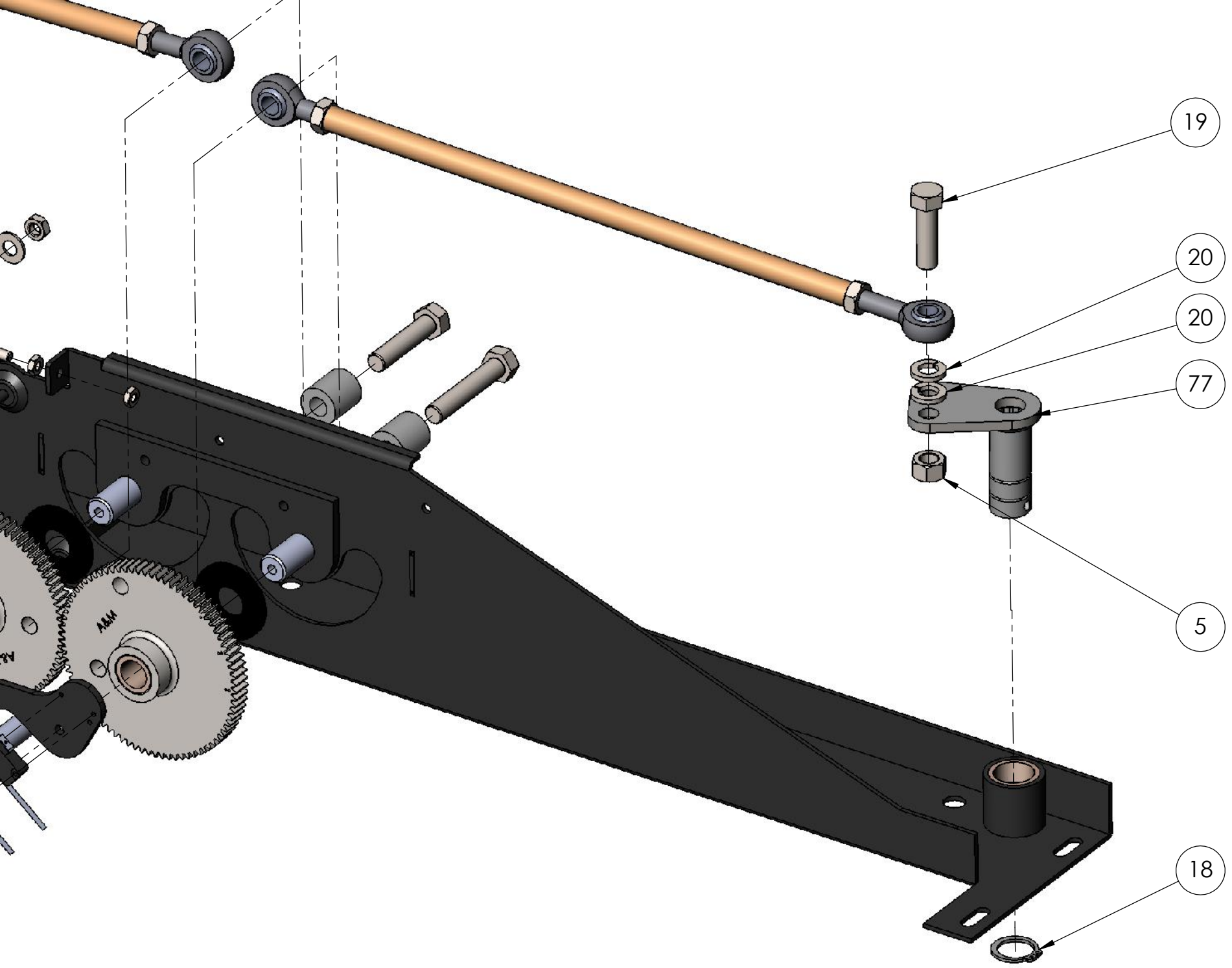
6

2x 23

A&M

A&M





19

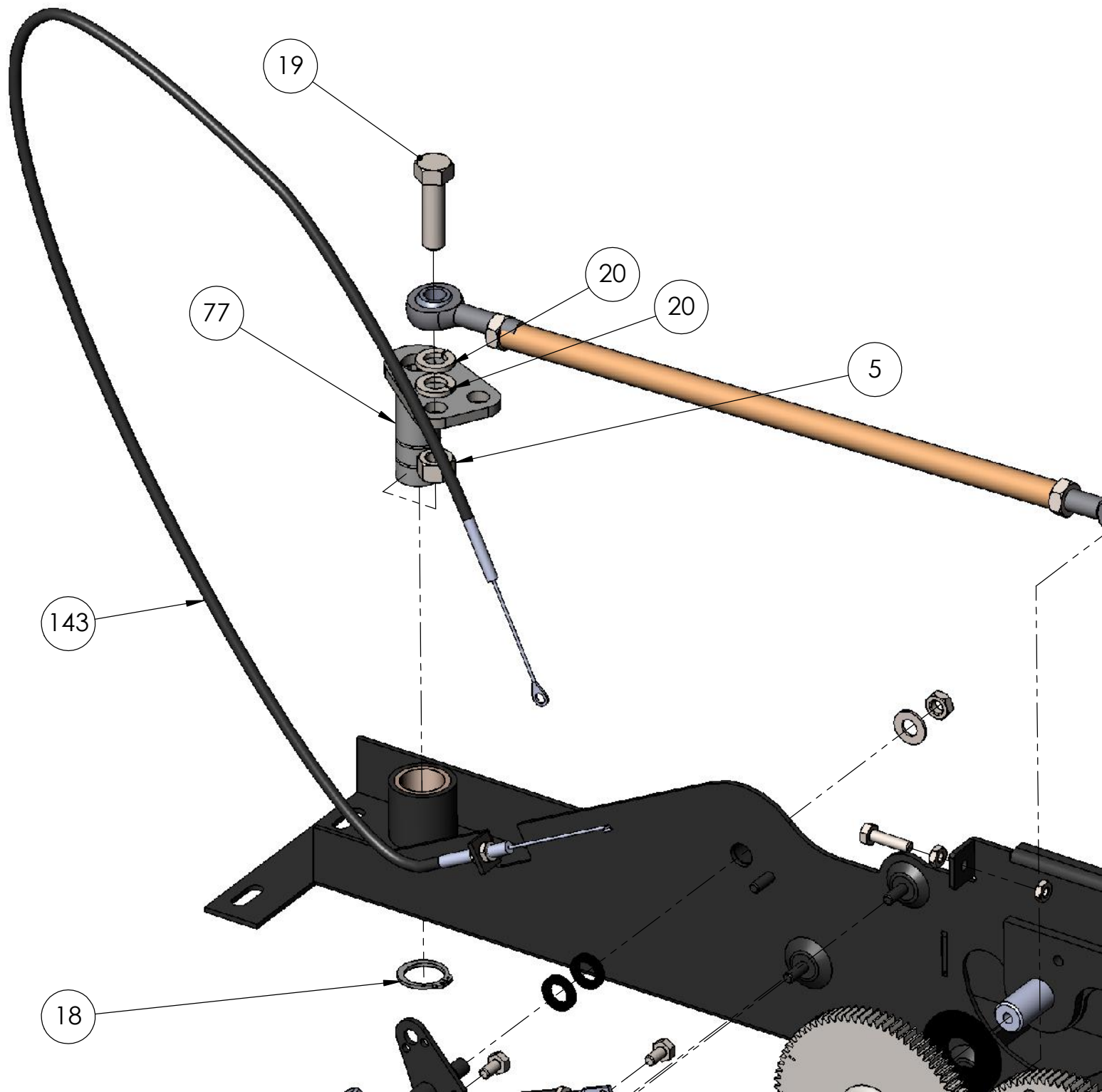
20

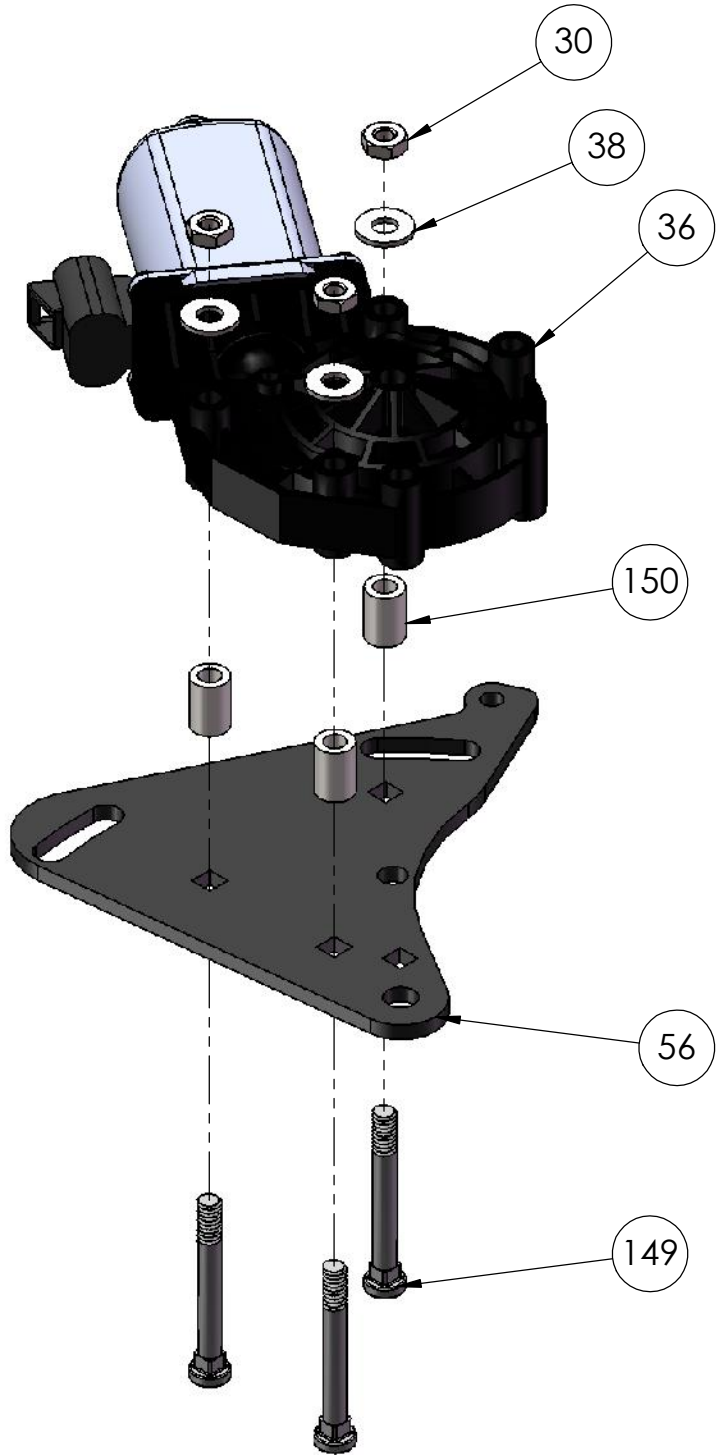
20

77

5

18





ITEM NO.	PART NUMBER	DESCRIPTION	QTY.
30	P100024	Nut, nylock, 1/4-20	3
36	P100047	Motor	1
38	P100018	Washer, 1/4 SAE Flat Zinc	3
56	1933	Motor Mount	1
149	2184	Bolt, Carriage, Square Neck	3
150	P100649	Spacer, .257" ID x .50" D x .688", Nylon	3