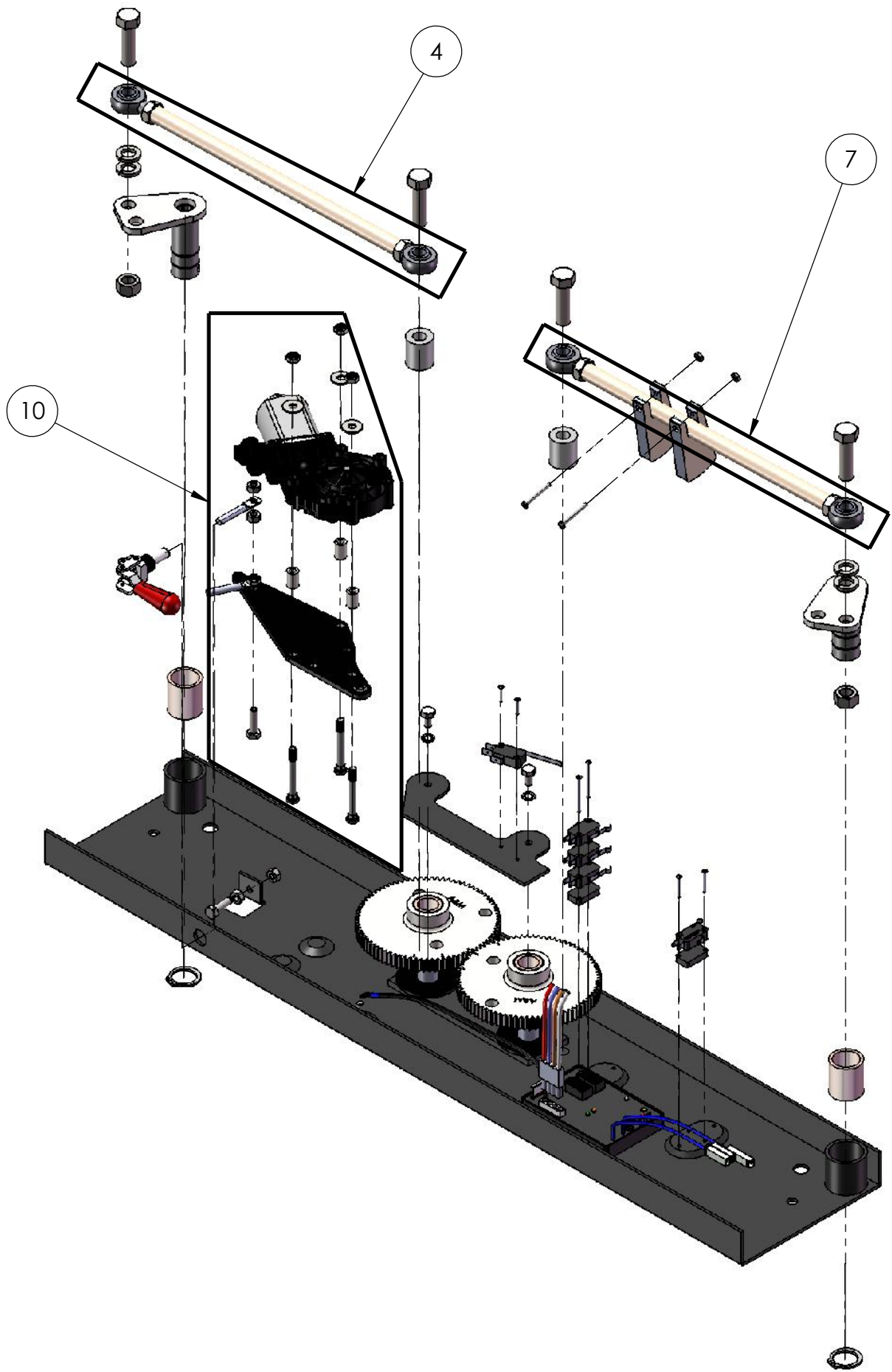
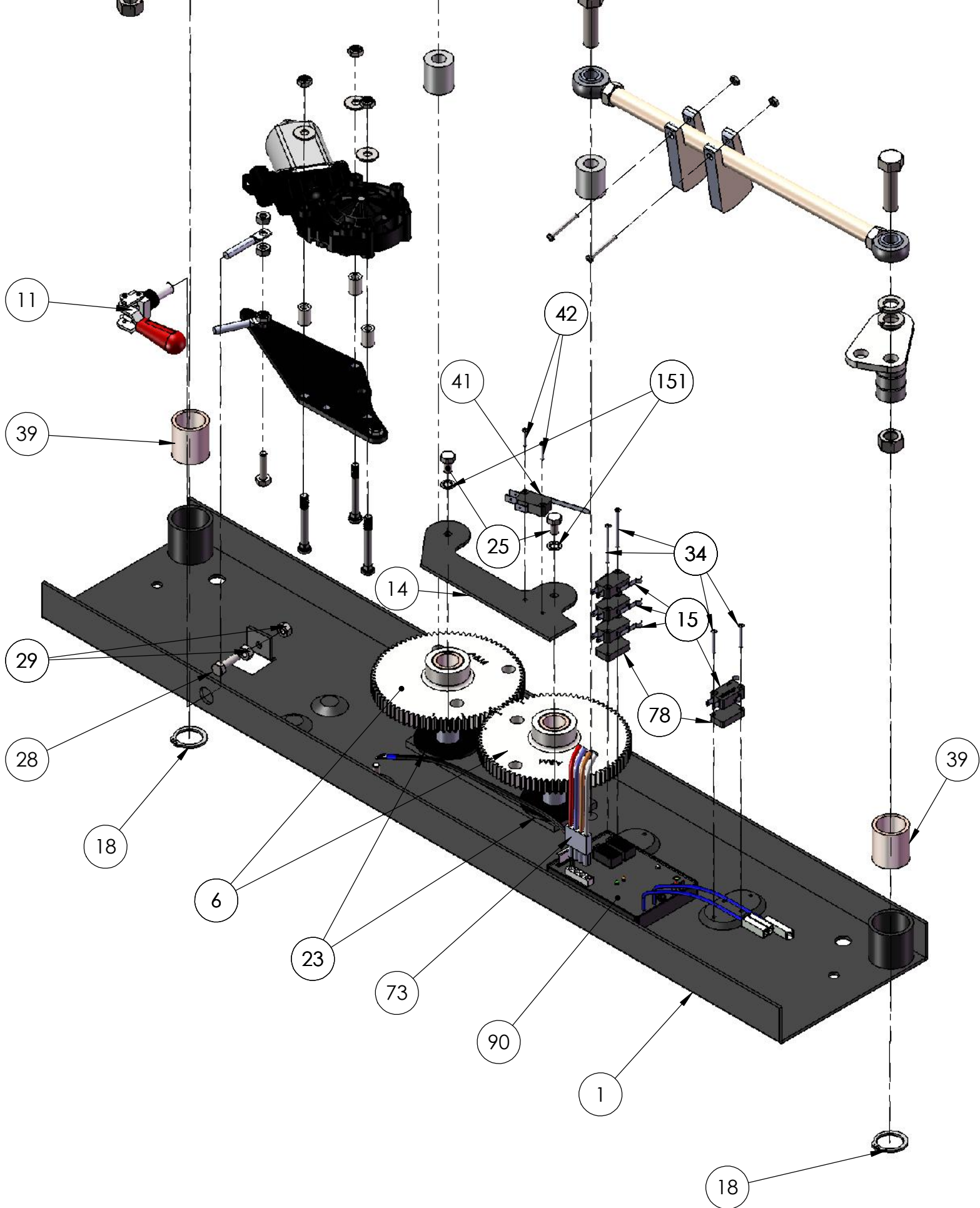


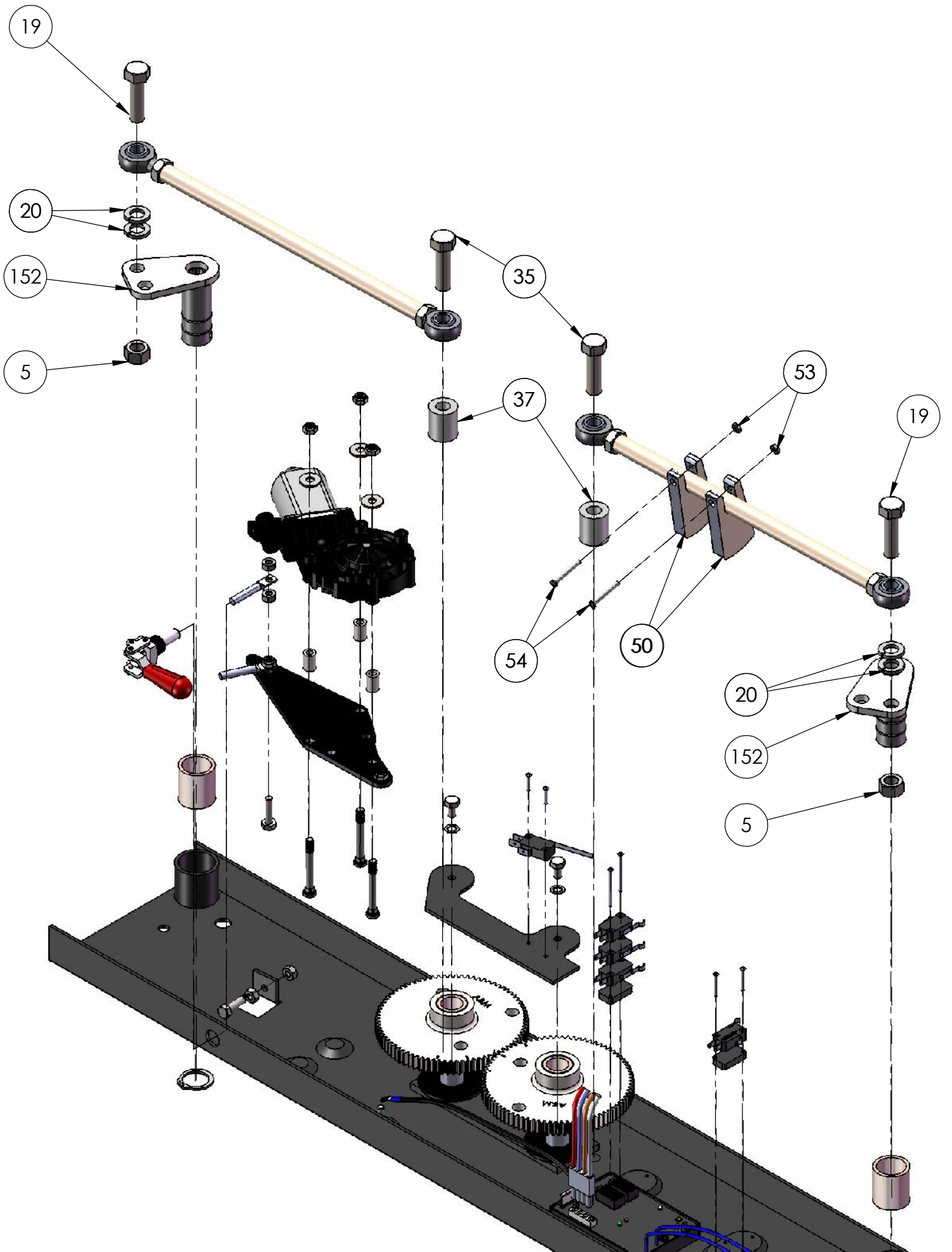
Model: 4433, 4444



| Index No. | Part No. | Description | No Req'd |
|-----------|----------|--|----------|
| 1 | M1662-24 | 4433 Weldment, with bushings | 1 |
| 1 | M1663-24 | 4444 Weldment, with bushings | 1 |
| 2 | P100044 | Actuator arm, forward | 1 |
| 4 | P100319 | 4433 Push-pull rod assembly, forward | 1 |
| 4 | P100323 | 4444 Push-pull rod assembly, forward | 1 |
| 5 | P100022 | Nut, 1/2-20 zinc plated | 2 |
| 6 | P100071 | Gear, with bushing | 2 |
| 7 | P100319 | 4433 Push-pull rod assembly, aft | 1 |
| 7 | P100323 | 4444 Push-pull rod assembly, aft | 1 |
| 10 | P100217 | Motor assembly | 1 |
| 11 | P100049 | Manual release lever | 1 |
| 12 | P100198 | Bolt, hanger, 1/4 flattened end x 2" | 1 |
| 14 | 1493 | Gear stabilizer | 1 |
| 15 | P100058 | Switch, limit | As Req'd |
| 18 | P100027 | Snap ring, (1" shaft) | 2 |
| 19 | P100005 | Bolt, 1/2-20 x 1-3/4" zinc plate grade 5 | 2 |
| 20 | P100019 | Lock washer, spring type, 1/2" | 4 |
| 23 | 1655 | Washer, ABS | 2 |
| 25 | P100001 | Bolt, 1/4-20 x 1/2" | 2 |
| 27 | 1517 | Motor mount | 1 |
| 28 | P100003 | Bolt, 1/4-20 x 1" | 2 |
| 29 | P100026 | Nut, plain, 1/4-20 | 3 |
| 30 | P100024 | Nut, nylock, 1/4-20 | 5 |
| 34 | | Screw, 4-40 Round Phillips Head | As Req'd |
| 35 | P100006 | Bolt, 1/2-20 x 2-1/4" | 2 |
| 36 | P100047 | Motor | 1 |
| 37 | 1010 | Spacer, Rod End | 2 |
| 38 | P100018 | Washer, 1/4 SAE Flat Zinc | 3 |
| 39 | P100041 | Bushing, bronze | 2 |
| 41 | P100060 | Switch, limit, Auto Reverse Only | 1 |
| 42 | P100011 | Screw, 4-40 x 5/8" Round Phillips Head | 2 |
| 50 | 1654 | Switch tab, ABS | As Req'd |
| 53 | P100203 | Nut, Nyloc, 6-32 | As Req'd |
| 54 | P100200 | Screw, Phillips, Round, 6-32 x 1-1/4" | As Req'd |
| 73 | W3131 | Pigtail (optional) | 1 |
| 78 | 1560 | Switch Spacer | As Req'd |
| 90 | P100371 | PC Board | 1 |
| 90 | P100546 | PC Board | 1 |
| 140 | W2006 | Wire, A.R. Null w/ Micro Connection (pair) | 1 |
| 149 | 2184 | Bolt, Carriage, Square Neck | 3 |
| 150 | P100566 | Spacer, .257" ID x .50" D x .625", Nylon | 3 |
| 151 | P100531 | Washer, 1/4", serrated, internal | 2 |
| 152 | 1980 | Actuator Arm, 2 in 1 Assembly, Weldment | 2 |







#10 - P100217 Motor Assembly Detail

