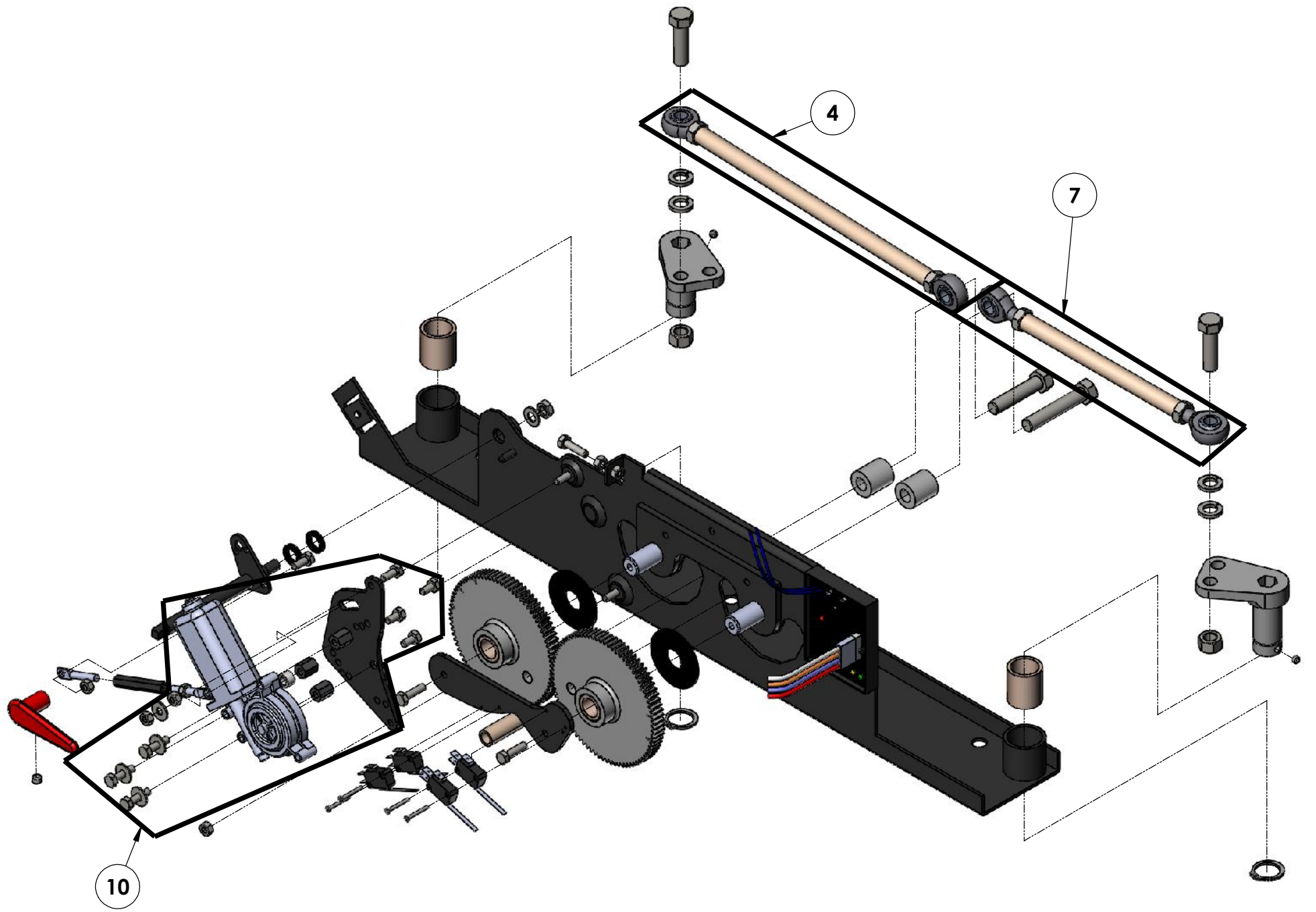


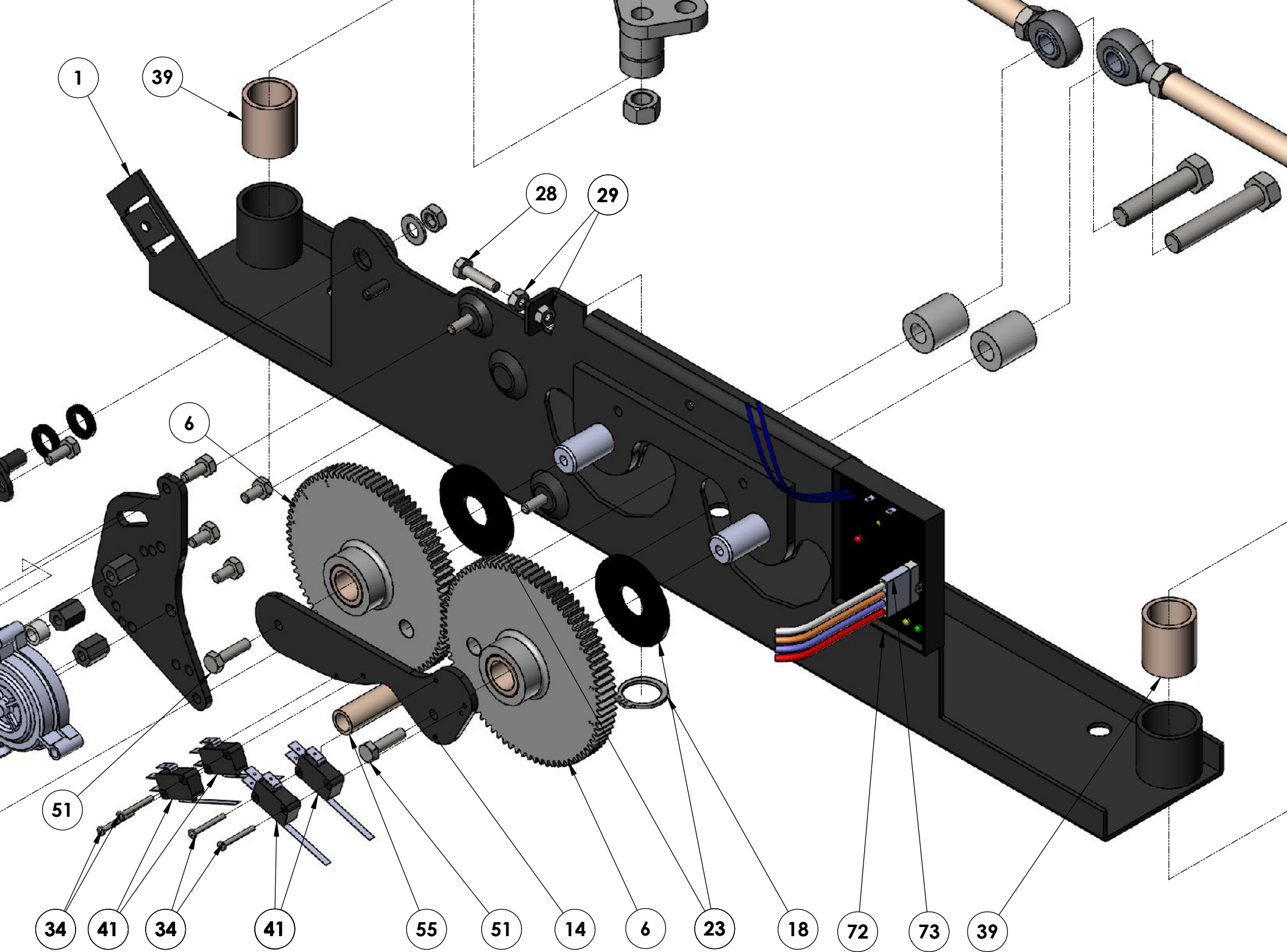
Model: 2729.2, 2729.3

Index No.	Part No.	Description	No Req'd
1	M1641-24	2729.2 Base plate weldment, with bushings	1
1	M1647-24	2729.3 Base plate weldment, with bushings	1
4	P100318	2729.2 Push-pull rod assembly, forward	1
4	P100497	2729.3 Push-pull rod assembly, forward	1
5	P100022	Nut, 1/2-20 zinc plated	2
6	P100071	Gear, with bushing	2
7	P100318	2729.2 Push-pull rod assembly, aft	1
7	P100319	2729.3 Push-pull rod assembly, aft	1
10	P100407	Motor Assembly	1
12	P100198	Bolt, hanger, 1/4 flattened end x 2"	1
14	1790	Gear stabilizer	1
15	P100058	Switch, limit	2
19	P100005	Bolt, 1/2-20 x 1-3/4"	1
20	P100019	Lock washer, spring type, 1/2"	2
23	1655	Fiber washer	2
24	P100086	Motor spacer	3
25	P100001	Bolt, 1/4-20 x 1/2"	3
28	P100003	Bolt, 1/4-20 x 1"	2
29	P100026	Nut, plain, 1/4-20	4
30	P100024	Nut, nylock, 1/4-20	2
34		Screw, 4-40 Round Phillips Head	4
35	P100006	Bolt, 1/2-20 x 2-1/4"	1
37	1010	Spacer	2
38	P100018	Washer, 1/4 SAE Flat Zinc	3
39	P100041	Bushing, bronze	2
40	P100056	Wire Clip	2
41	P100060	Switch, limit, auto-reverse null	4
51	P100007	Bolt, 1/4-20 x 1/2 Serrated Head	2
55	1768	Null Switch Extension	1
56	1733	Motor Mount	1
57	1770	Nylon Standoff, .359" tall	1
58	P100338	Motor, 110RH	1
59	P100315	Manual Release Handle	1
60	1752	Manual Release Shaft w/ Attachment	1
61	P100062	Set Screw, 1/4"-20	3
62	1767	Turnbuckle, 1/4"-20 LH, RH	1
63	P100283	Bolt, Hanger, 1/4" flattened end x 2", LH	1
64	P100284	Bolt, 1/2"-20 x 2.5"	1
72	P100371	PC Board	1
74	P100346	Bolt, 1/4-20 x 5/8"	2
77	1714	Actuator Arm, 2 in 1	2
84	P100023	Washers, 3/8 S.S.	As Req'd
133	P100481	Nut, 3/8-16, nyloc nut, thin	1
136	P100487	Set Screw, 5/16-18	1



4121 Eastland Dr.
 Elkhart, IN 46516
 Phone: 574-522-5000
 Fax: 574-522-9099





1

39

28

29

6

51

34

41

34

41

55

51

14

6

23

18

72

73

39

